

# *5th Anniversary Celebration*



*The Journey Neighbourhood Centre  
Five Years  
Bringing Hope and Transformation*

**November 21, 2013 – November 21, 2018**

## A Message from the Executive Director

This fall The Journey Neighbourhood Centre celebrates its 5<sup>th</sup> anniversary and it's a great time to reflect on our journey since. Like most journey's the trail has been rocky at times and winding and challenging with what often seems like a lot more uphill than down. In fact, immediately following our opening in November, 2013 we discovered that we didn't have all the necessary permits, and we weren't able to operate for about 3 weeks. That was immediately followed by the December ice storm and a cold winter that deterred community members from getting out to the handful of programs and events we offered at that time. However, led by Barbara-Anne Smith and Jamie Holtom, and powered by the people of North Bramalea United Church, our journey began. Just months later, and only 3 weeks after Kevin Birmingham joined The Journey as our Centre Manager, a fire at 59 Ardglen Drive left 18 families homeless and killed young Nicolas Gabriel. It was out of this disaster that The Journey really became an integral part of the community. We were all on this journey together.



While our story has, thankfully, been less dramatic since then, the trials, twists and turns have kept coming and through it all, together with the people of Ardglen/Orenda, The Journey has not only persevered, but

thrived. Today we have centres on both Ardglen Drive and Orenda Court, 5 staff members, and a wide range of programs ranging from art, music, science and reading, to camps, women's groups, tax clinics, mental health training, apartment painting, neighbourhood parties, and Sunday gatherings. We have programs for all ages and stages, from Early Years and Early On for toddlers, The Learning Spot and the After School Club for school aged children, to Think Tank for teens, and all the way to the 55+ Club for, well, those who are on the plus side of 55!

We now partner with numerous organizations that collaborate with us, provide programming and volunteers, and that raise and donate funds. Our partnership with North Bramalea United Church has been particularly important, walking alongside The Journey through it all. The Journey is making a difference in the lives of the children, youth and families of the Ardglen/Orenda neighbourhood, and enriching the lives of those who lead, volunteer and serve. I continue to be moved and inspired by the people of Ardglen/Orenda, and grateful for our staff members, board members, advisory team members, program leaders, sponsors, community partners and legion of volunteers. Together, we continue to bring hope and transformation!

Steve Allin, Executive Director

## Experience Our Celebration

In the following pages of this booklet you will experience a celebration of five years of The Journey Neighbourhood Centre in the Ardglen/Orenda community. This booklet is our report back to you about all the good things that have been taking place here at The Journey.

Enjoy!

Kevin Birmingham, Manager

# The Journey

## A Time Line



Community In Action  
(CIA) Committee  
Started

2011

2012

Ted Brown takes Jamie  
Holtom on a tour of  
challenged communities in  
Brampton – they arrive at  
Ardglen.



Sometimes there are challenges right in front of us, but we miss them. This was the case for the pastor of North Bramalea United Church. His children were born in the neighbourhood and Jamie Holtom had no idea what was hidden away here.



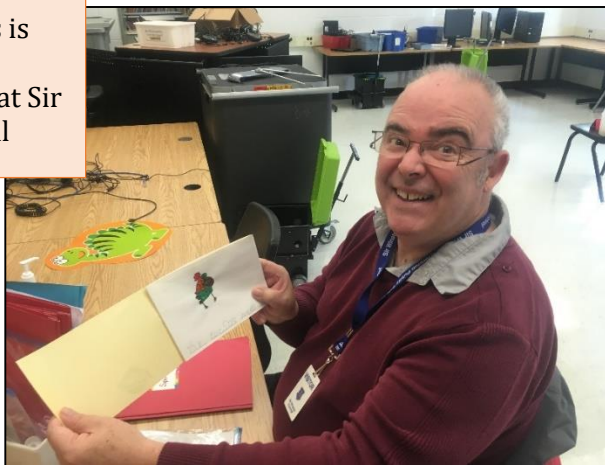


First Centennial Park  
Carnival and  
Christmas Dinners  
Delivered

2012

2013

Super Star Readers is  
Launched and  
Clothing Given Away at Sir  
Winston Churchill



North Bramalea starts reaching out to the community and seeking partnerships with other organizations including Sir Winston Churchill Public School. Connections are made with residents and some programs and services are delivered.



Time to be in the  
neighbourhood!  
*"The Word became  
flesh and blood,  
and moved into the  
neighbourhood."*  
- John 1:14 (MSG)

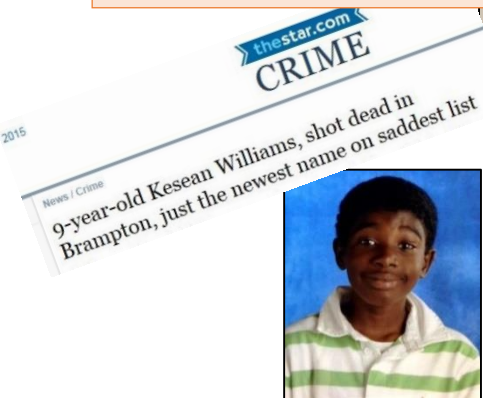
Programs Launched  
Homework Club  
Kidzone  
Hammer Band  
Refresh  
Summer Camp

2013

2014

Tragedy - January 23, 2013  
Kesean Williams  
shot and killed in

The Journey Opens  
November 21, 2013



The first collaborative agreement is signed creating The Journey Neighbourhood Centre: North Bramalea United Church, Community In Action, Queen/Kennedy Neighbourhood Team, Brampton Safe City and Habitat for Humanity

Programs, Collaborations,  
Events, Opportunities,  
Partnerships, Expansion



Love  
brampton



United Way  
Greater Toronto



2015

2014

June 8, 2014  
The Fire  
59 Ardglan



The Journey experienced many defining moments in the first years including: the tragic shooting death of Kesean Williams, Nicolas Gabriel's death and displacement of 18 families in the 59 Ardglan Fire and the fall United Way campaign launch.





Summer Time  
1<sup>st</sup> Fire Anniversary, Love  
Brampton, Refresh, Footprints,  
YMCA Employment, Summer  
Camp, Reel Youth



2015



2016

Lower Level Finished  
New Programs: Think Tank,  
EFry, Sunday Mornings,  
Basketball Camp



A new collaborative partnership  
with NBUC, Rapport, Regeneration  
and JET Mentors.



 Rapport Youth & Family Services

The second full year for The Journey was one of growth and discovery. We developed programs, organized events and met needs in the community. We conducted surveys, asked questions, developed partnerships and expanded our reach.





Family Programs  
The Learning Spot, Kidzone,  
ArtStart, Early Years, Women's  
Wednesdays



2016

2017



Community Events  
CAS Presentation,  
Tax Clinic, Career Speed  
Dating, SWC 50<sup>th</sup>, First  
Street Party, UW Days of  
Caring, Habitat for  
Humanity, Legacy Tree  
Planting



By the third full year The Journey has settled into a strong lineup of after school and women's programs, events, community seminars and strong partnerships and relationships with agencies, businesses and local schools.

**The Journey  
Expands  
80 Orenda Court**



**2018**

**2017**

**Programming  
After School Club, Early On,  
Friday Family Movie, March  
Break Camp, Empowerment  
Through Art, CPR Training**



**Orenda has always been a part of our target community, but it has been difficult to attract the Orenda community to cross the railway tracks. So, in 2017 we expanded. We started renting an apartment at 80 Orenda Court and filled the space.**

# *The Time Line Continues*

More Challenges  
3<sup>rd</sup> Ardglen Fire in 4 Years  
Tragic Shooting Death  
Sale of Ardglen Townhomes

2018

20??



Our Response  
Community Meetings  
Personal Support  
Caring People  
Relevant Programs



2018 has been a busy year. We ran 19 programs, two mental health seminars, and threw our largest street party eve. But there was a third fire in Ardglen, another shooting death and continued human trafficking. And, this is why we are here!



# A Story of Partnership

In the fall of 2016, The Journey Neighbourhood Centre approached CAPREIT, the owners and managers for 80 Orenda Court, with a request. We wanted to rent an apartment and use it as program centre for The Journey. CAPREIT, not only provided us with a suite and a parking spot, they also gave us a very generous donation. On January 1, 2017 The Journey and CAPREIT started a relationship that has not only benefited our two organizations, but most importantly the residents of Orenda Court.



Sunny Hansra is the Associate Director of Operations for CAPREIT. He is responsible for the strategic direction and asset management of 3,809 suites in 49 buildings throughout the western GTA. When asked about why CAPREIT would say yes to our request he pointed out that, “we provide homes and build communities . . . this is a way to give back to the communities that support us .

. . it is important to help people work together, to share ideas and to have an opportunity for people to be listened to.”

Shalini Bhutani is the Operations Manager for Orenda Court and 14 other buildings in Brampton and Malton. For her the relationship was an important step in, “building community . . . making it a better place . . . and building a partnership.”

Orenda Court is not the only location that CAPREIT has partnered with other organizations. In Knightsbridge CAPREIT is connected to programs that provide breakfast for school children, fire safety programs and Love Brampton. They also run their own programs such as food drives, summer children’s activities and collecting donations. This is all part of a desire of providing a community that, “people are comfortable with



... creating customer satisfaction and developing strong community partnerships and relationships.”

The feedback that they have received about The Journey’s presence in 80 Orenda Court has been positive and the residents have enjoyed and

appreciated the programming that we offer. This fall The Journey will offer seven different programs and a number of special events in OB3 of 80 Orenda Court.

The Journey appreciates the opportunity that CAPREIT has given us to better serve the Orenda Court community.



# Quality of Life Survey

## Introduction

This impact assessment was undertaken to gain a better understanding of the overall impact The Journey has had on the community since it opened. In addition, the survey was utilized to help gain additional insights into how The Journey can have even greater impact in the lives of Ardglen/Orenda residents, and to develop a greater understanding of the issues of concern to the community.

The community assessment included developing and carrying out a survey of program participants, volunteers and staff, as well as capturing on video a number of the stories of community members impacted by The Journey. The assessment was completed over the summer of 2018. One hundred and four adults and youth participated in the assessment.

## Executive Summary

The assessment results confirmed the strong support and appreciation that community members have for The Journey, the value they place on our programs and the strong, positive relationships we have developed with many community members. There are also significant opportunities to have an even greater impact, to bring hope and transformation to more people in Ardglen/Orenda.

The results of this assessment ring true with the feedback we've obtained over the course of our engagement with Ardglen/Orenda residents, and the video stories also help us to go beyond the data and into the lives of some of the community members we've impacted.

Notably, that we serve the community with authenticity and openness, shone through.





## Survey Structure



Developing the survey was a significant challenge; keeping in mind that survey contributors would likely prefer a survey that could be quickly and easily completed, while still providing us with an understanding of the impact The Journey has had on the community and how we can have even greater impact. As a result there were not a lot of open questions, although comments were invited. We also gathered some data about the persons completing the survey.

Both an online and paper format of the survey was prepared however when given the option, people preferred to fill out a paper survey. Surveys were obtained door to door, by word of mouth, over the phone, at booth set-ups, and event/program visits. In addition, stories about the impact of The Journey from a number of community members was captured on video.

## Findings

Our analysis of the survey results revealed some significant and constructive feedback on the work and impact of The Journey. Below are 10 key findings. They are not in any particular order.

### *Finding #1*

Overall, The Journey Neighbourhood Centre is loved for the work it's doing, and what we do extremely well is in bringing people together and in supporting the community. More specifically, respondents reported that The Journey has provided community members with valuable assistance, provided leadership and volunteering opportunities,

improved community awareness of social issues, helped people get to know their neighbours better, helped people find employment, and given people motivation and opportunities to volunteer and gain employment.



Here are a few specific comments:

- “Connecting with the community without any cultural/racial barriers”
- “Authenticity and meeting people where they're at.”
- “Gives the community an outlet and assistance.”
- ”Being there for ones in need in the community.”
- “Helping everybody out in positive ways.”

### *Finding #2*



Respondents reported that their children benefited significantly from the programs and events at The Journey with a wide range of positive outcomes. These included; an expanded circle of friends, improved positive behaviours, positive emotional well-being, improved academic results and improved creativity/skills.

Here are a few specific comments:

- “My kids attended the E-Fry program for teen boys and greatly appreciate it. My kids earned a lot of volunteer hours with The Journey. My kids got help with employment through The Journey.”
- “My daughters study violin more than 3 years. I saw them improving well.”
- “Made her very out-going and is very positive with herself.”
- “My child has advanced in many ways since coming to the journey.”

### *Finding #3*

Adult respondents were asked to provide insights into what they'd like to see The Journey do more of. The areas of greatest interest included; family events, recreation and exercise programs, employment support, housing support and mental health support.

### *Finding #4*

Youth and adults who responded for their children were likewise asked to provide insights into what they'd like to see The Journey do more of. The areas of greatest interest included recreation and exercise programs, art/creativity skills, behaviour/socialization skills, homework/school support, and education events.

### *Finding #5*

We drilled down into a number of issues of importance to the community including; Education, Employment, Housing, Recreation/Parks, Transportation, and Crime. Within each of these areas a list of more specific issues was



provided, which the respondents were asked to rank as higher or lower concerns. For example, under Education they were asked to rank their level of concern regarding EQAO/academic results, Homework support, Preparation for post-secondary, and tutoring.

From the rankings, respondents indicated a long list of issues that are of great concern including; general safety, assault/violence, high rental rates, theft/robbery, substance abuse, human trafficking, lack of housing options, poor housing maintenance, transportation is too expensive, tutoring, recreation is too expensive, limited recreation facilities, homework support, preparation for post-secondary, limited employment choices, employment training, traffic congestion, low wages, limited bus routes, recreation is too far away, employment is mostly short-term, and EQAO/Academic results. This is a lengthy list, but each of these areas listed had at least 40% of respondents ranked them at level 1 or 2 concerns.



### *Finding #6*

Respondents indicated that there is much that they like about their neighbourhood. Top results included; proximity to schools/parks/shopping/restaurants, being in a close-knit community, access to community events and the diversity of the community.



### *Finding #7*

The Journey regularly provides events devoted to specific topics of interest



to the community. Respondents were asked to provide insights into the topics they'd like to see coming up. The results included money management, mental health education, socialization, anti-bullying education, crime prevention and self-defence, and neighbourhood maintenance. Each of these topics received a high level of interest from least 30% of respondents.

### *Finding #8*

We asked about the level of interest in several specific topics from among topics we have addressed previously at The Journey. The results showed the following (ordered from greatest level to least level of interest):

- Employment Counselling
- Landlord/Tenant Issues
- Mental Health Counselling
- Health and Fitness
- Nutrition Education
- Budget/Finance



### *Finding #9*

In assessing the feedback we gleaned a number of other items of interest that we'd like to share:

- We can improve the level of awareness in the community of the range of programs and events we offer
- Some perceive The Journey as primarily offering programs for children
- Our survey respondents were almost exclusively women, often single parent moms. This aligns with our sense of who we have been engaging and our understanding that there is a disproportionately high number of single parent (usually mom) families in the neighbourhood. For many single moms, The Journey programs are incredibly valuable for their children and the social connections that happen with and through The Journey are important to them.

## Finding #10

On top of the data compiled through the survey the stories captured on video brought a greater understanding of the personal impact that The Journey has had on the community. These stories can be found on a link on our website.



## Conclusion

Lives have been changed, a sense of community has been built, relationships have developed, and hope has been restored for many. While significant issues persist, The Journey has made a difference. It is loved by the community. It is seen as authentic and committed. The Journey lends an open ear, offering a safe place, impactful programs and helping to develop a healthy and caring community. Residents want to see us continue to grow in order to continue bringing hope and transformation, as we walk alongside the children, youth and families of Ardglan/Orenda.



## Acknowledgments

I would like to express my deepest appreciation to all those who offered support, upon completing this project. Special gratitude goes out to Kevin Birmingham and Steve Allin for offering encouragement and providing assistance every step of the way.

Furthermore I would also like to acknowledge with great appreciation, The Journey staff and volunteers, The Journey Board, and all those who made it possible for this report. It has been a fulfilling experience. I also give a special thanks to my team and particularly Diana Simao for assembling together the necessary aspects that allowed us to reach our goals. I have to also appreciate the advice, guidance, and valuable teachings given by The Journey staff and community members that helped improve my presentation skills and overall knowledge. Thank you to all for your wisdom, warm welcoming, patience and understanding over the course of these 5 months.

Nicole Moriarty, Survey Lead

# Annual Report

## Our Mission

*The Journey is committed to bringing hope and transformation to the Ardglan/Orenda communities, walking alongside children, youth and families as they take positive steps in their lives.*

This mission is realized through:

*Relevant Programs • Transforming Properties • Advocating For Residents*

## Collaboration

The Journey is a collaborative partnership with North Bramalea United Church, Rapport Youth and Family Services, Regeneration Community Outreach and JET Mentors Youth and Community Services. But, most importantly The Journey is a partnership with the community of Ardglan and Orenda. Many of our volunteers and staff are community members.

## What We Do

Our goal at The Journey is to transform our community. Transformation can take many forms – physical, economic, educational, spiritual and emotional. Our programs and events are geared towards each of those elements. The following are some of the programs we offer at our two locations:

### *Programs (Seasonal, Weekly, Short Term)*

- The Learning Spot (Grades 3-6)
- Think Tank (Grades 9-12)
- After School Club (Grades 3-6)
- ARTStart (JK and Up)
- Hammer Band (Violin Lessons)
- Kidzone (JK-Grade 5)
- Visions of Science (Grades 3-8)
- Early Years (Parents & Tots)
- 55+ Club (55 and Up)
- Artistic Expressions (Adult)
- Summer Day Camps (4-12 year olds)



## Special Events

- Refresh (Apartment Painting)
- Community BBQs
- Holiday Camps
- Backyard Cleanups
- Friday Family Movie Night
- Outings: Zoo, Library, Hockey
- Community Seminars and Outreach Events



## Program Report

Over the past five years The Journey has seen significant growth in its outreach to the Ardglen/Orenda Community. For example, in our 2015 Ontario Trillium Foundation report we recorded an attendance of 256 unique individuals representing 85 families. By 2017 that number had increased to 360 unique individuals

representing 120 families. As of the time of this writing we anticipate a 2018 attendance of 662 unique individuals representing 130 families. In our April 2018 United Way report we reported an attendance of 866 people in our programs and events and 113 volunteers contributing 5,864 hours of service at The Journey.

Each year we have worked towards increasing our relevancy and value to our community. Over the past year we have offered a CPR course for both our staff and many of our key volunteers. We also offered two CMHA mental health seminars for our staff, volunteers and community residents. We've held Tax Clinics, an Elizabeth Fry program for teenage boys, a play day for moms and pre-schoolers at the Family Learning Centre and of course our Christmas and March Break Camps as well as our Summer Day Camp.



The Journey's reach also goes beyond our local community with The Journey Human Trafficking Committee. Human Sex Trafficking is a significant issue throughout the Region of Peel. This concern within our neighbourhood led to the creation of the committee, which The Journey co-chairs with the Peel Regional Police. We work to bring awareness of this issue

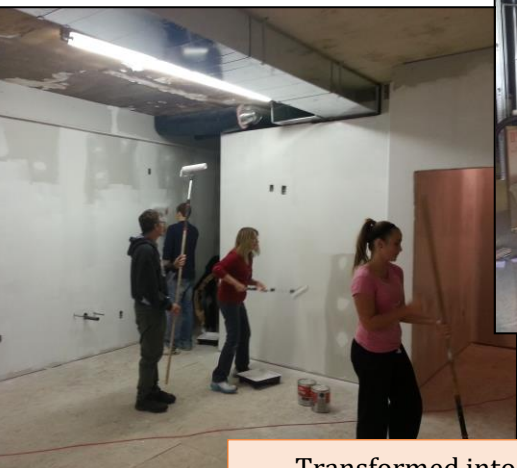
throughout the Region. As of this date we have sponsored six community meetings in neighbourhoods ranging from Port Credit to Malton and we have more scheduled in the future.

Kevin Birmingham, Manager

## Five Years in Photos



The old Ardglan Bakery.  
Two years of snow and  
rain through the roof.



Transformed into The  
Journey Neighbourhood  
Centre and opened with a  
party on November 21, 2013





Donations such as the Imagination Playground and new programs such as Hammer Band fueled the early years at The Journey.



There have been many exciting and interesting events and opportunities including: Love Brampton, Reel Youth Claymation and Refresh (apartment painting).







Programs, events and memories are a part of who we are. The police sponsored basketball camp, homework club, Reel Youth film making, Women's Wednesdays and the fire anniversary memorial are all a part of who we are.



Much of what we do is very practical including Bridgeway's Early Years program, Elevation's yard cleanups and Legacy's tree planting.



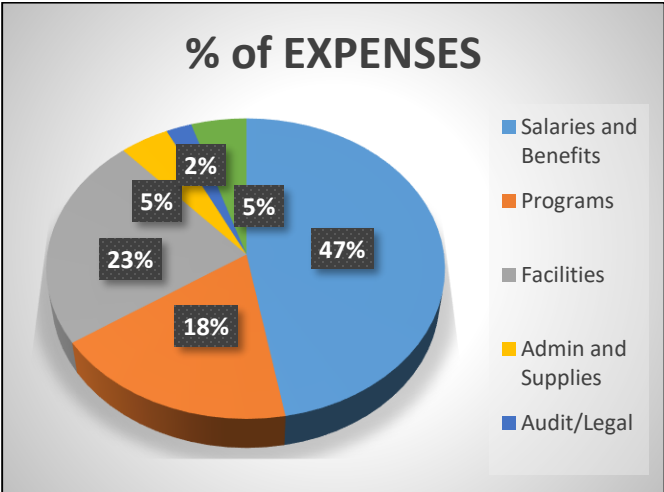
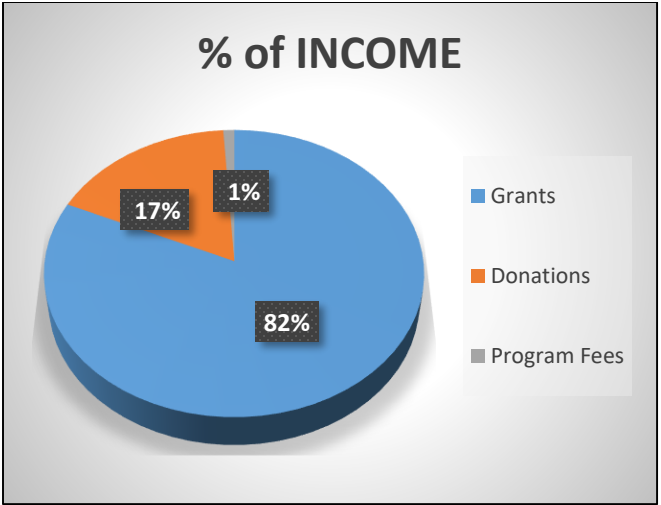
These are just a few of the many memories we have created and they are just a glimpse of the potential for creating many more!





## Income and Expenses

The 2017/18 fiscal year for The Journey ended August 31st with a total income of \$275,092 and expenses of \$275,091 for a deficit of just \$20, excluding depreciation. While at the time of this report these results were unaudited we do undertake a formal annual financial audit.





## The Journey Staff

Steve Allin – Executive Director • [steveallin01@gmail.com](mailto:steveallin01@gmail.com)

Kevin Birmingham – Centre Manager • [kevin.b@thejourneymail.ca](mailto:kevin.b@thejourneymail.ca)

Ashleigh Kelk – Community Engagement Facilitator, Ardglen • [ashleigh.k@thejourneymail.ca](mailto:ashleigh.k@thejourneymail.ca)

Aasia Khan – Community Engagement Facilitator, Orenda • [aasia.k@thejourneymail.ca](mailto:aasia.k@thejourneymail.ca)

Kyrel Thompson – Program Coordinator • [kyrel.t@thejourneymail.ca](mailto:kyrel.t@thejourneymail.ca)

## Collaborative and Programming Partners

The Journey has a number of partners including; North Bramalea United Church, Rapport Youth & Family Services, Jet Mentors and Community Services, Regeneration Outreach Community, The Hammer Band, Visions of Science, Elizabeth Fry Society, Bridgeway, and YMCA-GTA.



## Funding Partners

The Journey Neighbourhood Centre relies on a large number of organizations, community groups, corporations and individuals as well as fundraising to provide the financial resources needed to deliver the programing and events offered by The Journey.



Check Out Our Website, Facebook Page or Twitter Feed:

[www.thejourneyneighbourhoodcentre.ca](http://www.thejourneyneighbourhoodcentre.ca)

[www.facebook.com/thejourneyneighbourhoodcentre](https://www.facebook.com/thejourneyneighbourhoodcentre)

[@TheJourneyCtr](https://twitter.com/TheJourneyCtr)

*Come, Connect, Be Inspired*

# The Journey



The Journey



Your neighbourhood centre

**The Journey Neighbourhood Centre**

*Your neighbourhood centre*

9 Ardglan Drive, Brampton, ON L6W 1V1

OB3 – 80 Orenda Court, Brampton, ON L6W 3N2

(905) 230-8666